

WATSON ART CENTRE

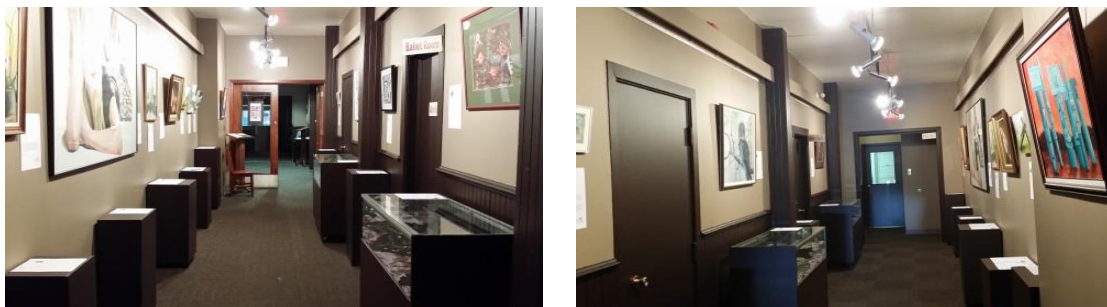
ART EXHIBITION SPACES

THE OLD FIREHALL



Panning from left to right, we have 2 walls on the new upper level of the Old Firehall. The South Wall (left) is 20 feet long, the East Wall (right) is 25 feet long, with a 12foot ceiling height. In addition, we have eight varying-height box pedestals and 2 cabinets available for displaying 3D artworks. The North and West walls do not yet have gallery tracking system and exhibition use is dependant on whether our volunteer craftsman is available to nail hang works with minimum damage to the drywall, repair/restore and repaint the drywall on takedown.

THE OLD GALLERY CORRIDOR



The old gallery has been converted into an open corridor with exhibition space. This new space, the Old Gallery Corridor, is now approximately 24 feet long and 9 feet wide, with picture hanging track system installed at an 8 foot height. Larger works of art hang from the tracking system along the length of the East Wall. The West wall is wainscoted and used for smaller works no more than 4feet tall distributed along its length between a series of 1-foot pillars and 3-foot doorways (pillar / 1.5' / door / 5' / pillar / 2.5' / door / 4.5' / pillar / 2.25'). The first photo (left) faces south toward the Watson Art Centre's front lobby, the second photo (right) is a north facing view of the Old Gallery Corridor with its rear entry access into the Old Firehall.

THE WATSON ROOM



The Watson Meeting Room, just off the main lobby of the building, features 20 feet of exhibition space along its East Wall with the picture track system hung from 10 foot height.